



Profit from the Eagle Advantage®

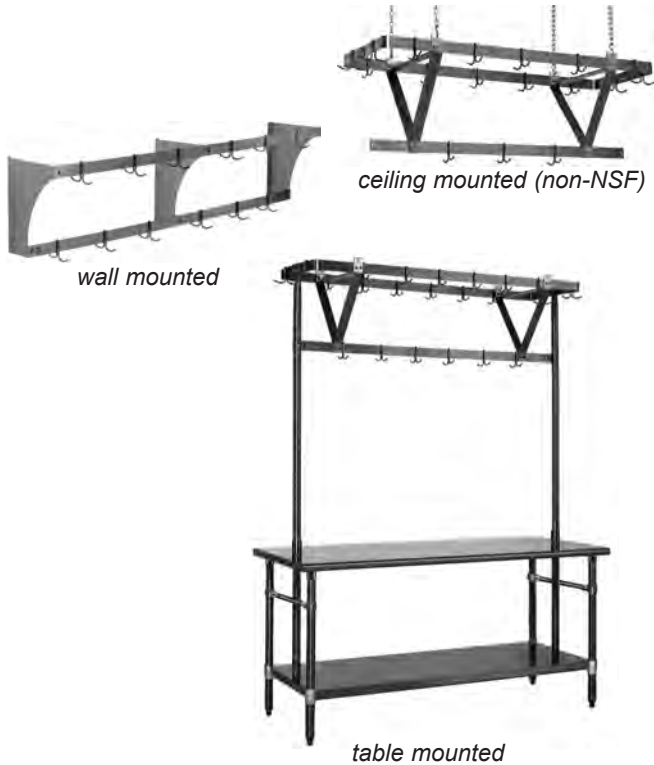
# Specification Sheet

## Short Form Specifications

Eagle Table Mounted Rack, model \_\_\_\_\_.  
Constructed of 3/8" x 2" (aluminum or stainless steel) flat bar, bolted together. Triple bar construction, furnished with one stainless steel double prong sliding pot hook every 12". 1 1/2" O.D. stainless steel tubular supports extend through table and are secured to adjustable undershelf. Available with optional 12" wide 16/304 stainless steel shelf.

Eagle Ceiling Mounted Rack, model \_\_\_\_\_.  
Constructed of 3/8" x 2" (aluminum or stainless steel) flat bar, bolted together. Triple bar construction, furnished with one stainless steel double prong sliding pot hook every 12". Provided with plated chain hangers for ceiling suspension.

Eagle Wall Mounted Rack, model \_\_\_\_\_.  
Constructed of 3/8" x 2" (aluminum or stainless steel) flat bar bolted together. Furnished with one stainless steel double prong sliding pot hook every 12", and provided with stainless steel mounting brackets.



Item No.: \_\_\_\_\_  
Project No.: \_\_\_\_\_  
S.I.S. No.: \_\_\_\_\_

## Racks

### MODELS:

- |                                 |                                 |                                 |
|---------------------------------|---------------------------------|---------------------------------|
| <input type="checkbox"/> CM36*  | <input type="checkbox"/> TM36*  | <input type="checkbox"/> WM36*  |
| <input type="checkbox"/> CM48*  | <input type="checkbox"/> TM48*  | <input type="checkbox"/> WM48*  |
| <input type="checkbox"/> CM60*  | <input type="checkbox"/> TM60*  | <input type="checkbox"/> WM60*  |
| <input type="checkbox"/> CM72*  | <input type="checkbox"/> TM72*  | <input type="checkbox"/> WM72*  |
| <input type="checkbox"/> CM84*  | <input type="checkbox"/> TM84*  | <input type="checkbox"/> WM84*  |
| <input type="checkbox"/> CM96*  | <input type="checkbox"/> TM96*  | <input type="checkbox"/> WM96*  |
| <input type="checkbox"/> CM108* | <input type="checkbox"/> TM108* | <input type="checkbox"/> WM108* |
| <input type="checkbox"/> CM120* | <input type="checkbox"/> TM120* | <input type="checkbox"/> WM120* |
| <input type="checkbox"/> CM132* | <input type="checkbox"/> TM132* | <input type="checkbox"/> WM132* |
| <input type="checkbox"/> CM144* | <input type="checkbox"/> TM144* | <input type="checkbox"/> WM144* |

\* See charts on back for full model numbers.

### Ceiling mounted (non-NSF)

- Racks are triple-bar construction.
- Supported with plated chain hangers supplied.
- Available in stainless steel or aluminum.
- Provided with double-pronged pot hooks.

### Wall Mounted

- Racks are double-bar construction.
- Supplied with die-formed stainless steel brackets.
- Available in stainless steel or aluminum.
- Provided with double-pronged pot hooks.

### Table Mounted

- Racks are triple-bar construction.
- Front-to-back adjustable crossbracing, plus adjustable undershelf.
- 1 1/2" (41mm) tubular stainless steel supports extend through tabletop and are secured to adjustable undershelf. Units 108" (2743mm) and longer have three supports.
- Provided with double-pronged pot hooks.
- Available in stainless steel or aluminum.

### Options / Accessories

- Additional sliding hooks
- All-welded construction
- 12"-wide adjustable shelves (for Table Mounted Racks)

**EAGLE GROUP**  
100 Industrial Boulevard, Clayton, DE 19938-8903 USA  
Phone: 302-653-3000 • Fax: 302-653-2065  
www.eaglegrp.com

**Foodservice Division: Phone 800-441-8440**  
**MHC/Retail Display Divisions: Phone 800-637-5100**

For custom configuration or fabrication needs, contact our **SpecFAB® Division**.  
Phone: 302-653-3000 • Fax: 302-653-3091 • e-mail: specfab@eaglegrp.com



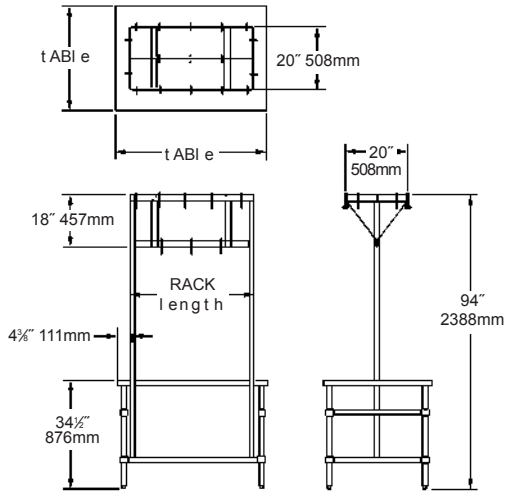
EG10.12 Rev. 06/14

**Spec sheets available for viewing, printing or downloading from our online literature library at [www.eaglegrp.com](http://www.eaglegrp.com)**



Item No.: \_\_\_\_\_  
 Project No.: \_\_\_\_\_  
 S.I.S. No.: \_\_\_\_\_

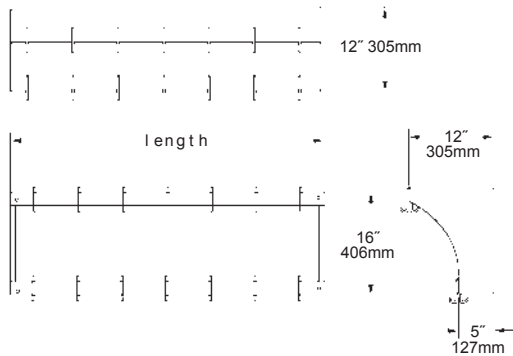
### Table Mounted Racks



ALUMINUM			STAINLESS STEEL			rack length		fits table length	
model #	weight lbs.	kg	model #	weight lbs.	kg	in.	mm	in.	mm
TM36APR	38	17.2	TM36PR	50	22.7	28"	711	36"	914
TM48APR	42	19.1	TM48PR	57	25.9	40"	1016	48"	1219
TM60APR	46	20.9	TM60PR	64	29.0	52"	1321	60"	1524
TM72APR	50	22.7	TM72PR	70	31.8	64"	1626	72"	1829
TM84APR	54	24.5	TM84PR	77	34.9	76"	1930	84"	2134
TM96APR	58	26.3	TM96PR	83	37.6	88"	2235	96"	2438
TM108APR*	62	28.1	TM108PR*	89	40.4	100"	2540	108"	2743
TM120APR*	66	29.9	TM120PR*	95	43.1	112"	2845	120"	3048
TM132APR*	71	32.2	TM132PR*	102	46.3	124"	3150	132"	3353
TM144APR*	76	34.5	TM144PR*	109	49.4	136"	3454	144"	3658

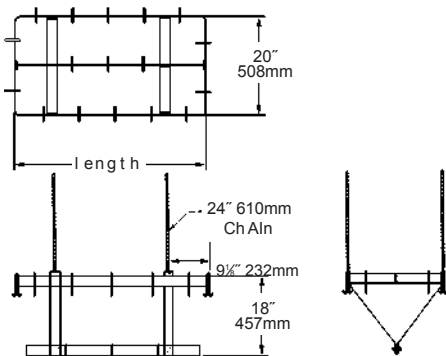
\* These racks include center tubular support.

### Wall Mounted Racks



ALUMINUM			STAINLESS STEEL			rack length	
model #	weight lbs.	kg	model #	weight lbs.	kg	in.	mm
WM36APR	13	5.8	WM36PR	18	8.2	36"	914
WM48APR	15	6.8	WM48PR	22	10.0	48"	1219
WM60APR	17	7.7	WM60PR	26	11.8	60"	1524
WM72APR	19	8.6	WM72PR	29	13.2	72"	1829
WM84APR	21	9.5	WM84PR	33	15.0	84"	2134
WM96APR	23	10.4	WM96PR	37	16.8	96"	2438
WM108APR	25	11.3	WM108PR	41	18.6	108"	2743
WM120APR	28	12.7	WM120PR	45	20.4	120"	3048
WM132APR	31	14.1	WM132PR	50	22.7	132"	3353
WM144APR	34	15.4	WM144PR	55	24.9	144"	3658

### Ceiling Mounted Racks



ALUMINUM			STAINLESS STEEL			rack length	
model #	weight lbs.	kg	model #	weight lbs.	kg	in.	mm
CM36APR	28	12.7	CM36PR	41	18.6	28"	711
CM48APR	32	14.5	CM48PR	48	21.8	40"	1016
CM60APR	36	16.3	CM60PR	54	24.5	52"	1321
CM72APR	40	18.1	CM72PR	60	27.2	64"	1626
CM84APR	44	20.0	CM84PR	67	30.4	76"	1930
CM96APR	48	21.8	CM96PR	74	33.6	88"	2235
CM108APR	53	24.0	CM108PR	81	36.7	100"	2540
CM120APR	58	26.3	CM120PR	87	39.5	112"	2845
CM132APR	63	28.6	CM132PR	94	42.6	124"	3150
CM144APR	68	30.8	CM144PR	101	45.8	136"	3454

**EAGLE GROUP**  
 100 Industrial Boulevard, Clayton, DE 19938-8903 USA  
 Phone: 302-653-3000 • Fax: 302-653-2065  
 www.eaglegrp.com

Foodservice Division: Phone 800-441-8440  
 MHC/Retail Display Divisions: Phone 800-637-5100

Printed in U.S.A.  
 ©2014 by Eagle Group

Rev. 06/14

Spec sheets available for viewing, printing or downloading from our online literature library at [www.eaglegrp.com](http://www.eaglegrp.com)

Although every attempt has been made to ensure the accuracy of the information provided, we cannot be held responsible for typographical or printing errors. Information and specifications are subject to change without notice. Please confirm at time of order.