



# BEVERAGE-AIR

|                 |      |
|-----------------|------|
| Project: _____  | AIA# |
| Item: _____     |      |
| Location: _____ | SIS# |
| Approved: _____ |      |

**DW49HC DEEP WELL SERIES: HORIZONTAL BOTTLE COOLERS**

## HORIZONTAL BOTTLE COOLERS

DW49HC Frosty Brew Deep Well Series  
Hydrocarbon Series

**MODEL:**  
DW49HC-B-29



**3 Year Parts/Labor Warranty**  
**Additional 4 Year Compressor Warranty**

### CABINET CONSTRUCTION

- Exterior features durable black painted steel
- Galvanized steel interior and floor
- Full electronic control
- Tops include easy glide, stainless steel lids (2)
- Stainless steel countertop with integral glass stops
- Three (3) epoxy coated adjustable wire dividers
- Bottle opener and cap catcher standard
- Constructed with high cooling RPM fans to provide fast cooling

### OPTIONS & ACCESSORIES

- Stainless steel interior
- Wire divider
- Lid locks
- 3" Casters or 6" adjustable leg with plate
- Remote option\* (see note on back on page)

### REFRIGERATION SYSTEM

- Refrigeration system uses R290 refrigerant to comply with all environmental concerns
- Automatic, non-electric defrost
- Epoxy coated evaporator coil
- Forced air refrigeration system holds product between 30°-32°F



  
Please verify qualifying units by visiting:  
[www.energystar.gov/cfs](http://www.energystar.gov/cfs)

3779 Champion Blvd., Winston-Salem, NC 27105  
1-888-845-9800 Fax: 1-336-245-6453  
Beverage-Air.com Sales@bevair.com



# BEVERAGE-AIR

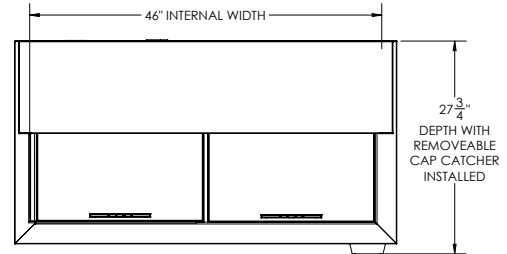


## Horizontal Bottle Coolers - Deep Well Model: DW49HC-B-29

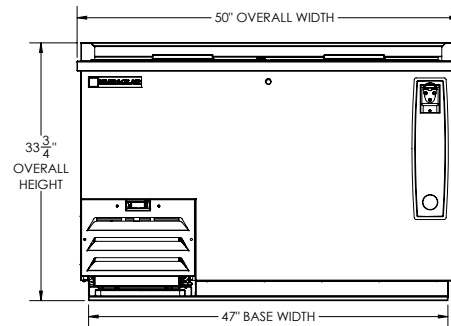
| MODEL                                |  | DW49HC-B-29  |
|--------------------------------------|--|--------------|
| <b>EXTERNAL DIMENSIONAL DATA</b>     |  |              |
| Width Overall                        |  | 50"          |
| Depth Overall                        |  | 26 1/2"      |
| Depth Overall with Cap Catcher       |  | 27 3/4"      |
| Height Overall                       |  | 33 3/4"      |
| Number of Lids                       |  | 2            |
| <b>INTERNAL DIMENSIONAL DATA</b>     |  |              |
| NET Capacity (cubic ft.)             |  | 13.7         |
| Internal Width Overall (in)          |  | 46"          |
| Internal Depth Overall (in)          |  | 22 3/4"      |
| Internal Height Overall at Step (in) |  | 15 1/2"      |
| Internal Height Overall (in)         |  | 26 3/4"      |
| Number of Dividers                   |  | 3            |
| 12 oz. Bottle Capacity               |  | 17 1/2 Cases |
| 12 oz. Can Capacity                  |  | 23 3/4 Cases |
| <b>ELECTRICAL DATA</b>               |  |              |
| Full Load Amperes                    |  | 2.5          |
| <b>REFRIGERATION DATA</b>            |  |              |
| Horsepower                           |  | 1/4          |
| Capacity (BTU/Hr)                    |  | 1702         |
| Heat Rejection (BTU/Hr)              |  | 2553         |
| Charge (lbs/grams)                   |  | 0.2314/105   |
| <b>SHIPPING DATA</b>                 |  |              |
| Gross Weight - Crated                |  | 274 lbs      |
| Height - Crated                      |  | 41"          |
| Width - Crated                       |  | 52"          |
| Depth - Crated                       |  | 30"          |

\*NOTE: Remote units are field wired and come with 6" legs.  
Refrigerant must be specified at time of order.

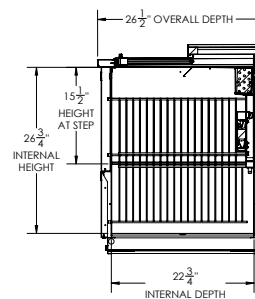
### Model Views



### PLAN VIEW



### ELEVATION VIEW



### SIDE VIEW

### ELECTRICAL CONNECTION



115/60/1  
NEMA 5-15P

Unit pre-wired at factory and include 8' long cord and plug set.



3779 Champion Blvd., Winston-Salem, NC 27105 1-888-845-9800 Fax: 1-336-245-6453 Beverage-Air.com Sales@bevair.com

an Ali Group Company



The Spirit of Excellence