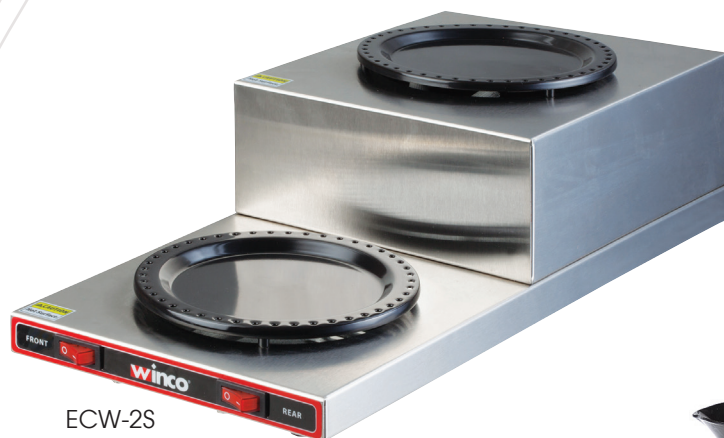


# ELECTRIC COFFEE WARMERS



ECW-2S



ECW-2



ECW-1

- ◆ Low-profile is space-saving and provides maximum product visibility
- ◆ Durable stainless steel body with ceramic-coated plates
- ◆ Separate lighted on/off switches for convenient operation
- ◆ ETL listed for electrical safety and sanitation
- ◆ 120V~60Hz, 100W per burner

ITEM	DESCRIPTION		UOM	CASE
ECW-1	Single Burner	100W	Each	6
ECW-2	Double Burners	200W	Each	6
ECW-2S	Step-Up Double Burner	200W	Each	1



= Cash & Carry / Retail Packaging

**winco**  
www.wincous.com

**East Coast:**  
Tel. 1.888.946.2682  
Fax. 1.888.946.2632

**West Coast:**  
Tel. 1.888.946.2652  
Fax. 1.562.926.5678