

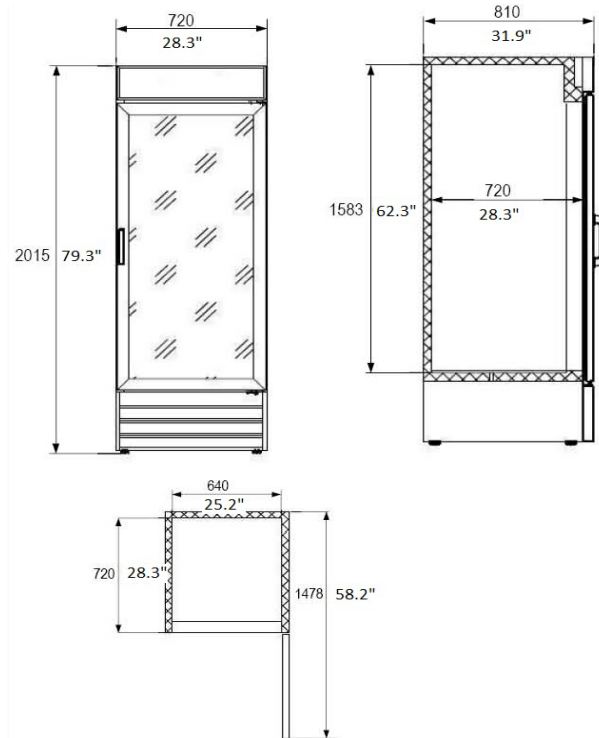
Model:  
**EGDM-29B**

## Swinging Glass Door / Reach-In

 Cooler

 White

 Black



5-15P



Doors	Shelves	Refrigerant	HP	Power	Amps.	Cu.ft.	Weight(lbs.)
1	4	R290	1/4+	115/60/1	6	14	280

## FEATURES

- Cabinet Construction**
  - ✓ Exterior - Coated steel.
  - ✓ Interior - Attractive, aluminum liner with stainless steel floor.
- Rounded corner** design inside of the cabinet makes it easy to clean it.
- Standard door features:**
  - ✓ Double pane thermal insulated glass door assembly with extruded plastic frames.
- Refrigeration system:**
  - ✓ Holds 33°F to 41°F (0.5°C to 5°C) ideal for fresh food products.
- Electronic control system:**
  - ✓ Adjustable temperature set point and defrost frequency.
  - ✓ Error codes to diagnose service issues.
- Shelves:** Adjustable, heavy duty PVC coated shelves.
- LED light inside of the cabinet.**
- Standard heavy-duty casters** make it easy to move and clean underneath.
- "No Stoop" lower shelf.
- Storage on top of cabinet.
- Easily accessible condenser coil for cleaning, and easy service access.
- Simple installation with no plumbing required.