



Project _____
 AIA # _____ SIS # _____
 Item # _____ Quantity _____ C.S.I. Section 114000



FD4/50, FD4/75, FD4/125 FOODWASTE DISPOSERS



**Short Housing
Model**



**Long Housing
Model**

Complies with
ASSE 1009



SPECIFIER STATEMENT

Hobart Disposers are well recognized for quality and capacity. They're designed with your needs in mind – built with a large capacity for food wastes.

The following pages illustrate the variations of controls and accessories available to make these food waste disposers the most versatile equipment for small to medium sized clean-up systems.

SPECIFICATIONS

Motors: Continuous duty rating, equipped with manual reset thermal overload inherent protector. Permanently lubricated ball bearings for upper and lower shelf support. Upper bearing is sealed on both sides.

Housings: Heavy aluminum grind and discharge housings. Four bolts fasten the motor unit to the grind chamber, permit easy removal.

Mounting: All Hobart disposers (except when using accessory group E), fasten to 7" I.D. (throat opening) cones. A vinyl isolating ring eliminates metal-to-metal contact at the cone mounting, reduces vibration and noise transmission.

Stationary Shredder Ring: 1¾" high, 4 machine ground primary action breaker bars, 42 secondary action grinding teeth.

Flywheel: Breaker blade, mounted at center, speeds grinding, prevents objects from "riding" at center. Two hardened stainless steel cutter blocks (fastened to flywheel with nylock screws) are replaceable, can be indexed for new cutting edges. Ni-Resist flywheel is 6¾" diameter, slots undercut the shredder ring to assure that particles are cut to proper size before passing to the drain line.

Motor Shaft Seal: Seal is a high quality, cartridge style mechanical face seal. The rotating mating ring matches to a wear resistant seal surface.

Drain Connector: A chrome plated brass tailpiece is provided for connection to a 1½" standard drain trap.

Dual Directional Grinding: All disposers operate in either direction of flywheel rotation. Direction of rotation can be controlled by the operator (to increase life and efficiency of grinding elements – back flywheel free of a "jam") when installed with Control Groups 5 & 6.

Weight: Shipping – approximately 60 lbs. (does not include accessory group or controls).

FD4/50, FD4/75, FD4/125 FOODWASTE DISPOSERS

Approved by _____ Date _____ Approved by _____ Date _____

ACCESSORY GROUPS

GROUP A (For use with long upper housing only.)



Vinyl Scrapping Ring



Stainless Steel Silver-Saver Sleeve with Side Feed Hole



Water Swirl



Vacuum Breaker

GROUP B (For use with long upper housing only.)



Vinyl Silver-Saver Splash Guard Ring



Water Swirl



Vacuum Breaker

GROUP C (For use with long upper housing only.)



Vinyl Silver-Saver Splash Guard Ring



Vacuum Breaker



Pre-Rinse Spray with Wall Bracket

GROUP D (For use with long upper housing only.)



Nitrile Rubber Silver-Saver Splash Guard Ring



7" I.D. Stainless Steel Weld-in Adapter for Sink



Fixed Direction Water Inlet for Sink



Vacuum Breaker

GROUP E (For use with short upper housing only.)



NOTE: For use with short Upper Housing Foodwaste Disposer only.



Cover Stopper and Sink Adapter Assembly for 3 1/2" to 4" Sink Opening



Fixed Direction Water Inlet for Sink



Vacuum Breaker

ACCESSORY COMPONENTS

CONES-SINK – Stainless Steel



Part No.

Cone 15" I.D. w/hole for water swirl inlet..... 204007

Cone 18" I.D. w/hole for water swirl inlet..... 204004

Cone 15" I.D. w/out swirl hole..... 204006

Cone 18" I.D. w/out swirl hole..... 204003



Sink 16" x 20" x 7" (7" opening) w/hole for water inlet..... 204015-2

WATER INLETS



Cone Water Swirl Inlet 1/2" N.P.T. 204380



Fixed Direction Water Inlet (for sinks or troughs) 1/2" N.P.T. 204346

FLOW CONTROL



Part No.

5 Gallons per minute for Model FD4/50 through FD4/125 – 3/4" N.P.T. 201721

CONE COVER – STAINLESS STEEL



15" Cone cover w/feed hole 204024

18" Cone Cover w/feed hole 204023

CONE FEEDING ACCESSORIES



Vinyl Scrapping Ring 202113



Stainless Steel Silver-Saver Sleeve with side feed hole 203870

SILVER-SAVER SPLASH GUARD RING



Vinyl Silver-Saver and Splash Guard Ring (for 7" opening cones, sinks and adapter) 202120

VACUUM BREAKERS – Chrome Plated



3/4" 277112

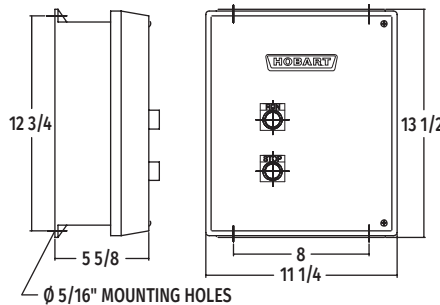
Adapters are available to install Hobart Disposers on existing cones. See Form F7543.



FD4/50, FD4/75, FD4/125 FOODWASTE DISPOSERS

ELECTRICAL CONTROL GROUPS

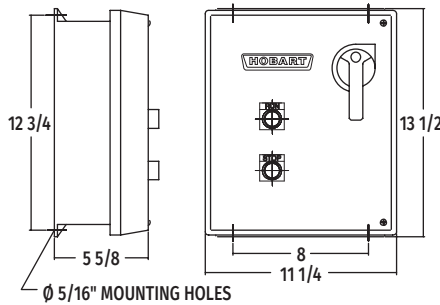
Listed by Underwriters Laboratories Inc., for use with FD4 Disposers (50 Hz. Electrical Specifications not submitted for UL Listing.)



Group 5 - For all Models

- Includes:*
 Magnetic Contactors
 Pushbutton Start and Stop
 Automatic Reversing
 Made from a NEMA 4 Enclosure
 Solenoid Valve (24 V only)

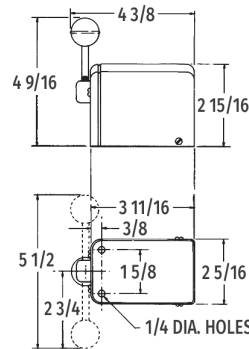
Approximate
Shipping Wt. 19 lbs.



Group 6 - For all Models

- Includes:*
 Magnetic Contactors
 Pushbutton Start and Stop
 Automatic Reversing
 Time Delay for water after shut-off
 Line Disconnect
 Solenoid Valve (24 V only)
 Made from a NEMA 4 Enclosure

Approximate
Shipping Wt. 20 lbs.



Group 4 - For Models thru FD4/200

- Includes:*
 Manual Reversing Switch
 NEMA 1 Enclosure Standard
 NEMA 4 Enclosure Optional
 Not available above 250 volts
 Optional Solenoid Valve

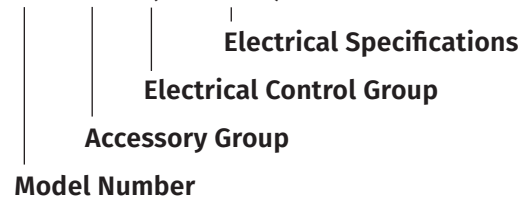
Approximate
Shipping Wt. 11 lbs.

Model	H.P.	Ph.	Hz.	Volts	Rated Amps
FD4/50	1/2	1	60	120/208-240	4.6 / 2.3
		3	60	208-240/480	2.5-2.4 / 1.2
FD4/75	3/4	1	60	120/208-240	6.3 / 3.15
		3	60	208-240/480	2.6-2.4 / 1.2
FD4/125	1 1/4	1	60	120/208-240	11.1 / 5.05
		3	60	208-240/480	4.0 / 2.0
FD4/50	1/2	1	50	110-120/220-240	6.8 / 3.4
		3	50	220-240/380-415	2.6 / 1.3
FD4/75	3/4	1	50	110-120/220-240	8.2 / 4.1
		3	50	220-240/380-415	2.6 / 1.3
FD4/125	1 1/4	1	50	110-120/220-240	12.8 / 6.4
		3	50	220-240/380-415	4.6 / 2.3

The dash (-) between voltages represents the range (low-high) of voltage operation.
 The slant (/) line indicates the dual voltage operation accomplished by motor lead connection: follow connecting diagram on motor.

SAMPLE SPECIFICATION

FD4/75 — B — 4 (230/60/3)



Cut hole 19" for 18" cone. Hole to be 16" for 15" cone.

Solenoid must be installed in upright position.

Disposer may be easily rotated for better drain line connection.

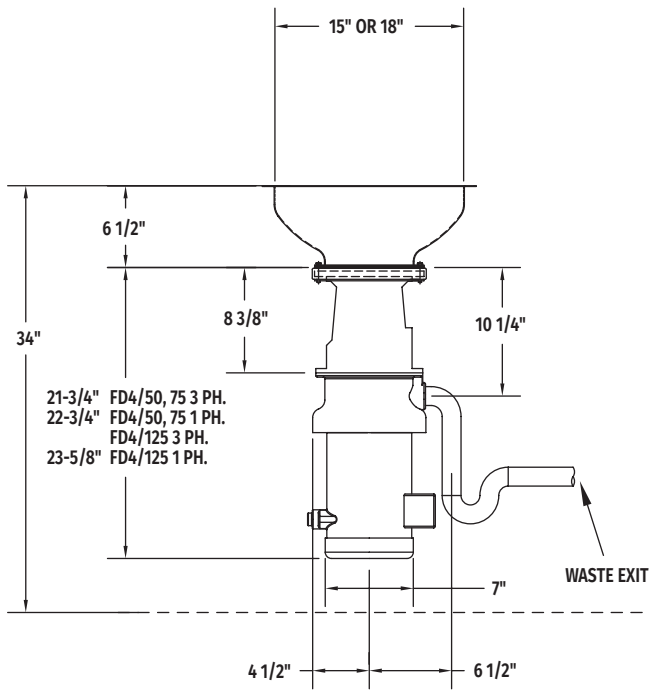
Center line at wall outlet of trap should not be higher than center line of disposer discharge opening.

If water pressure is in excess of 60 P.S.I. install a pressure reducing valve.

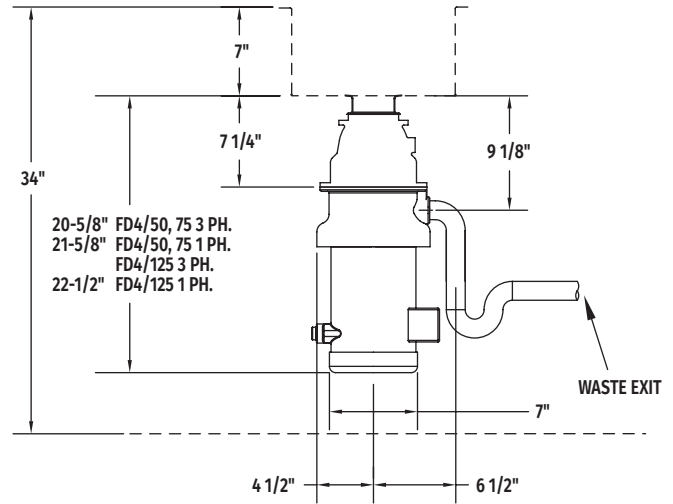


FD4/50, FD4/75, FD4/125 FOODWASTE DISPOSERS

DETAILS AND DIMENSIONS

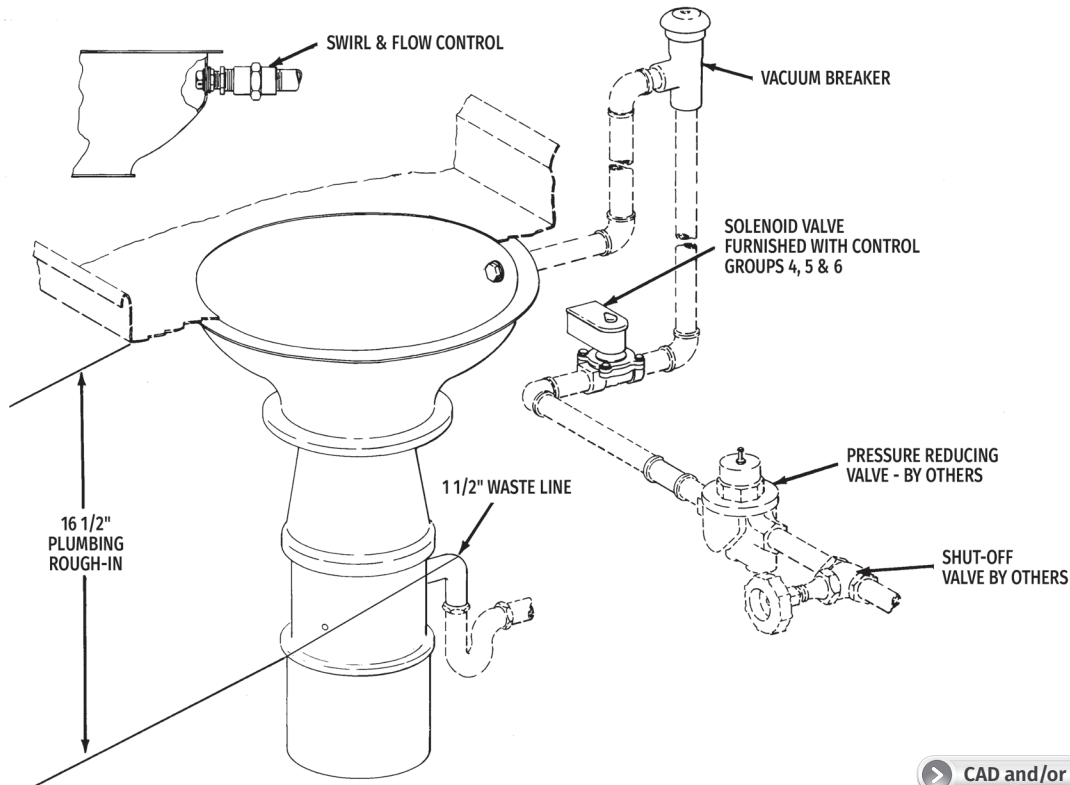


Long Upper Housing



Short Upper Housing

TYPICAL INSTALLATION – Unit with Long Upper Housing



As continued product improvement is a policy of Hobart, specifications are subject to change without notice.