



Maxx Cold | The Legacy Companies
 3355 Enterprise Avenue, Suite 160, Fort Lauderdale, FL 33331
 (954) 202-7419 • Fax (954) 202-7337 • (877) 600-8401
 www.MaxximumFoodService.com • Info@MaxxColdFoodService.com

Project Name: _____
 Location: _____
 Item #: _____ Qty: _____
 Model: _____

International Model:
 Add -50 (220V/50Hz/1Ph)

UNDERCOUNTER REFRIGERATORS

Model: MCR27U MCR48U MCR60U MCR72U



MCR27U



MCR48U



MCR60U



MCR72U

Maxx Cold Undercounter Refrigerators are designed for performance and reliable service. A high quality stainless steel exterior and interior allows for easy cleaning and urethane insulated walls and doors provide a consistent cold storage environment that makes the most of available space.

FEATURES

- Easy to grip recessed door handles
- Adjustable heavy duty wire shelves (1 per section/door)
- Four (4) or Six (6) 5" diameter caster wheels standard
- Each section can accept full sized sheet pans
- Available in 120V/60Hz, 220V/50Hz & 230V/60Hz

TEMPERATURE

- Holding temperature: 33° to 41°F (1° to 5°C)
- Utilizes environmentally friendly refrigerant R134A
- Forced-air refrigeration
- Efficient cooling system (two fans)
- Automatic defrost system

CONSTRUCTION

- Durable, easy to clean stainless steel exterior and interior
- CFC-free Polyurethane insulated walls and doors
- MCR27U door is field reversible
- Single self closing door, stays open past 90°

REFRIGERANT

Environmentally-friendly R-134A propane

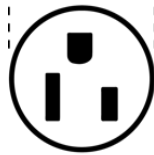
ELECTRIC

120/60Hz/1 Ph (NEMA 5-15)

Cord set includes plug & 9.8' (3m) cord

220V/50Hz & 230V/60Hz available as options

1.27" / 32 mm



NEMA 5-15P



Certified to
ANSI-NSF 7



Certified to
ANSI UL 471



Maxx Cold WARRANTY (USA / CANADA)

Three (3) years parts and on-site labor

Five additional (5) years compressor (part only)

Administered by The Legacy Companies, 877.368.2797

24/7 tech support provided

Due to periodic changes in designs, methods, procedures, policies and regulations, the specifications contained in this sheet are subject to change without notice. While we exercise good faith efforts to provide information that is accurate, we are not responsible for errors or omissions in information provided or conclusions reached as a result of using the specifications. By using the information provided, the user assumes all risks in connection with such use.

The built in performance enhancing functions ensure that given proper attention and preventative maintenance, each Maxx Product will deliver years of trouble free, reliable, low maintenance, efficient operation.

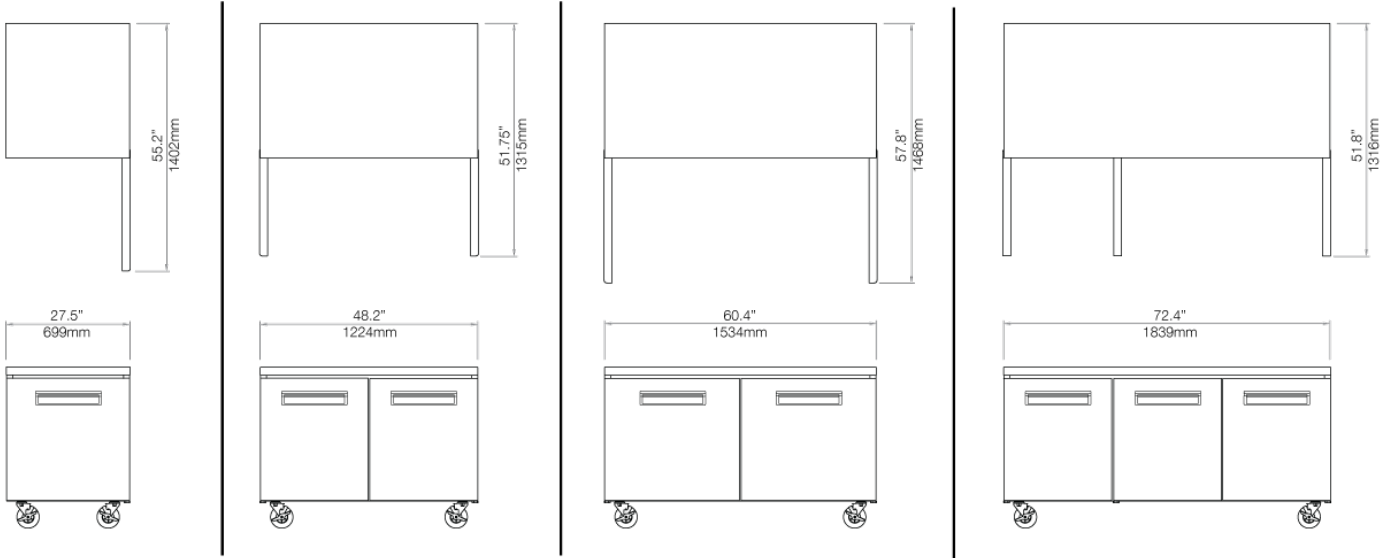
UNDERCOUNTER REFRIGERATORS

MCR27U

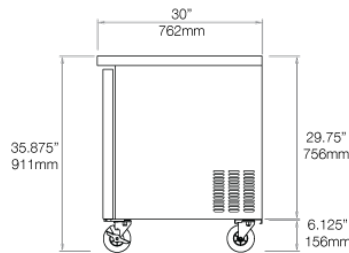
MCR48U

MCR60U

MCR72U



Side View
All Models



*Shorter caster options are available to bring overall unit height as low as 32" to satisfy either ADA or low profile application needs

	Dimensions* in / mm	Capacity	Temperature Range	Voltage	Amps	Unit Weight	HP
MCR27U	27.5 x 30 x 35.875 699 x 762 x 911	7 Cu Ft 198 L	33°-41° F 1°-5° C	120V/60Hz/1	3.2	185 lb 84 kg	1/5
MCR48U	48.5 x 30 x 35.875 1232 x 762 x 911	13 Cu Ft 368 L	33°-41° F 1°-5° C	120V/60Hz/1	6	264 lb 120 kg	1/5
MCR60U	60.5 x 30 x 35.875 1537 x 762 x 911	16 Cu Ft 453 L	33°-41° F 1°-5° C	120V/60Hz/1	6	308 lb 140 kg	3/8
MCR72U	72.5 x 30 x 35.875 1941 x 762 x 911	20 Cu Ft 566 L	33°-41° F 1°-5° C	120V/60Hz/1	6.1	353 lb 160 kg	3/8

Due to periodic changes in designs, methods, procedures, policies and regulations, the specifications contained in this sheet are subject to change without notice. While we exercise good faith efforts to provide information that is accurate, we are not responsible for errors or omissions in information provided or conclusions reached as a result of using the specifications. By using the information provided, the user assumes all risks in connection with such use.