



Manufacturer and Supplier of  
**Restaurant Equipment**  
 and **Display Cases**  
 for the Food Service Industry



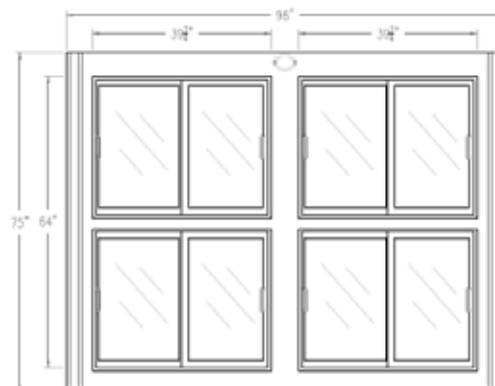
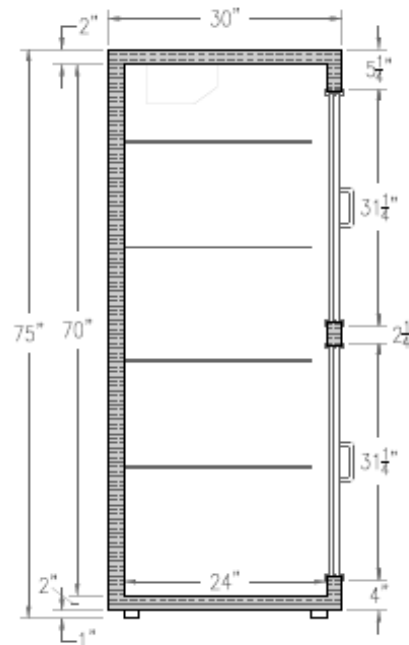
# MODEL: RW-96

## PRODUCT FEATURES

- Stainless Steel front
- Remote controlled system
- White vinyl coated aluminum interior
- (8) Glass Sliding doors
- Florescent interior lighting
- Holds 33°-41°F temperatures
- Adjustable vinyl coated wire shelves
- Compressor not included
- Environmentally friendly 134A refrigerant
- 115V, 5.5 Amps

Illuminated sign panel (optional)

Casters	NA
Warranty	1 yr Parts
Front Door	Glass
Front Motor Cover	NA
Interior Walls	White Aluminum
Outside Back	Galvanized



### Product Specifications

Dimensions	Doors	Shelves	Cooling Cycle	Refrigerant	HP	Power	Ampr.	BTU	Freon (oz)
96"X30"X 75"	8	12	33-41	NA	NA	115/60/1	5.5	1400	NA

### Additional Models

Model #	Doors	Shelves	Cooling Cycle	Refrigerant	HP	Power	Ampr.	BTU	Freon (oz)
RW-54	4	8	33-41	NA	NA	115/60/1	2.4	1400	NA
RW-73	4	8	33-41	NA	NA	115/60/1	5.5	2300	NA
RW-120	8	16	33-41	NA	NA	115/60/1	5.5	3400	NA
RW-144	8	16	33-41	NA	NA	115/60/1	7.0	4600	NA

\* Model number designates product length. Due to product improvement, we reserve the right to change specifications without notice.