



Manufacturer and Supplier of  
Restaurant Equipment  
and Display Cases  
for the Food Service Industry

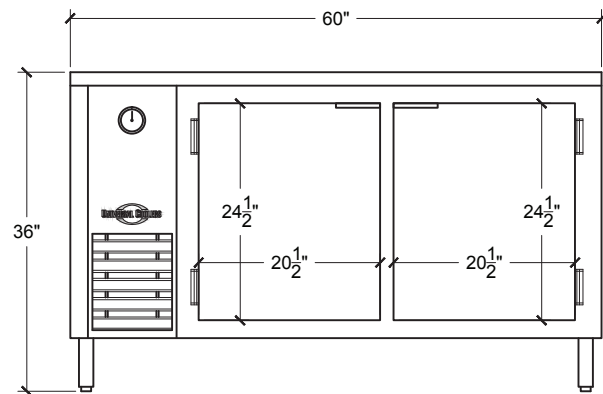
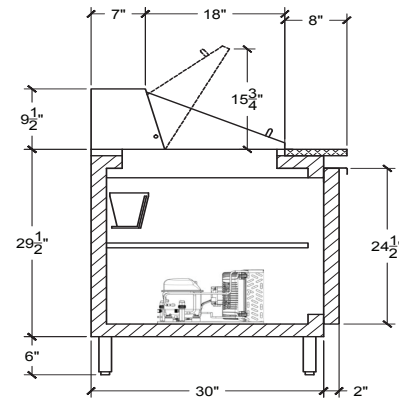


# MODEL: SC-48-LBD

## PRODUCT FEATURES

- 2 pull out Stainless Steel doors
- 30% More interior space
- 2" recessed pans (keeps food in colder storage area)
- side mounted evaporator system
- Self-contained
- Holds standard hotel size pans
- Integrated door light
- Interior lighting
- Holds 33°-38°F temperatures
- Compressor can be serviced easily
- Environmentally friendly 134A refrigerant
- 1/4 HP, 115V, 7.5 Amps

- |                          |                         |
|--------------------------|-------------------------|
| <b>Casters</b>           | 5" Casters Optional     |
| <b>Warranty</b>          | 1 yr Parts & Compressor |
| <b>Front Door</b>        | Stainless Steel         |
| <b>Front Motor Cover</b> | Anodized Aluminum       |
| <b>Interior Walls</b>    | Stainless Steel         |
| <b>Outside Back</b>      | Galvanized              |



### Product Specifications

Dimensions	Doors	Shelves	Cooling Cycle	Refrigerant	HP	Power	Ampr.	BTU	Freon (oz)
48x32 x36	2	2	33-41	134a	1/3	115/60/1	7.5	900	11.5

### Additional Models

Model	Doors	Shelves	Cooling Cycle	Refrigerant	HP	Power	Ampr.	BTU	Freon (oz)
SC-60-LBD	2	2	33-41	134a	1/3	115/60/1	8.5	900	11.5
SC-72-LBD	3	9	33-41	134a	1/3	115/60/1	9	1200	11.5

\* Model number designates product length. Due to product improvement, we reserve the right to change specifications without notice.  
120 13th Street Brooklyn, NY 11215 • Ph. 718-788-8621 • Fax. 718-788-0482 • www.universalcoolers.com