

Turbo air
 REFRIGERATOR MANUFACTURER
 more durable, convenient, beautiful

1250 Victoria St
 Carson, CA 90746
 Tel. 310-900-1000
 Fax. 310-900-1077
 www.turboairinc.com

Project :	
Model # :	
Item # :	Qty :
Available W/H :	
Approval :	

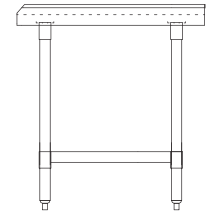
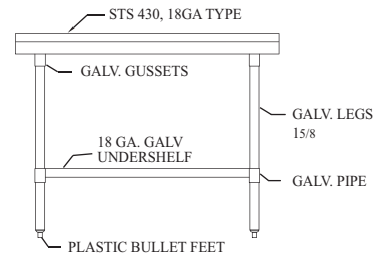
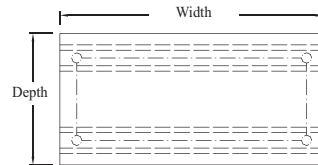
Equipment Stand

Stainless Steel Equipment

Model : TSE-



EQUIPMENT STAND



≡ FEATURES & BENEFITS ≡

- EASY TO ASSEMBLE
- ALL EDGES ARE FINISHED TO PROVIDE SAFETY
- H/L FINISHED STAINLESS STEEL TOP
- TOP REINFORCED WITH WELDED "HAT" CHANNEL FRAME
- SOUND-DEADENING TAPE BETWEEN CHANNEL FRAME AND TOP
- GUSSETS ARE RECESSED INTO CHANNEL FRAME TO PREVENT LATERAL MOVEMENT
- GALVANIZED LEGS, UNDER SHELF AND GUSSETS ARE STANDARD ON ALL MODELS
- ADJUSTABLE ABS BULLET FEET, 1 1/2" LEDGE ON SIDE AND BACK

(unit : inch)

Model*	Ga.	L	D	H	Net Weight [†]	Shipping Weight [†]
TSE-2812	18	12	28	24	25	28
TSE-2818	18	18	28	24	31	33
TSE-2824	18	24	28	24	36	38
TSE-2836	18	36	28	24	47	50
TSE-2848	18	48	28	24	58	61
TSE-2860	18	60	28	24	69	72
TSE-2872	18	72	28	24	86	89
TSE-3012	18	12	30 1/4	24	25	28
TSE-3018	18	18	30 1/4	24	31	33
TSE-3024	18	24	30 1/4	24	36	40
TSE-3036	18	36	30 1/4	24	47	50
TSE-3048	18	48	30 1/4	24	58	62
TSE-3060	18	60	30 1/4	24	69	75
TSE-3072	18	72	30 1/4	24	86	92

Information and specifications are subject to change without notice.

* All units shipped knocked-down.

† All weights are approximated. Crafting fee will be added for shipping via common carriers (Please confirm at the time of the purchase).